

Cardboard 1

The below specification details the wastes that are acceptable, and those not acceptable in the Cardboard 1 specification:

YES

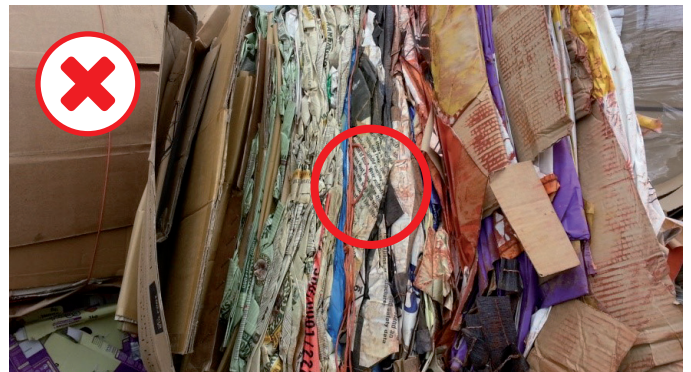
- ✓ Cardboard
- ✓ OCC (old container cardboard)
- ✓ KLS (kraft lined straw)
- ✓ Moisture (less than 10%)



Both examples of OCC, some of the cardboard boxes are coloured which does not cause problem as long as the majority appear brown in colour.

NO (Output Grade)

- ✗ Scan/carton board
- ✗ Heavy printed scan
- ✗ Kraft bags with or without stitching or plastic liners
- ✗ Paper
- ✗ Wax cartons
- ✗ Waxed board (wet strength or coated)
- ✗ Laminated or PE coated card
- ✗ Cores
- ✗ Gift cards
- ✗ Brochures
- ✗ Moisture (more than 10%)



Cardboard bale contaminated with Kraft Bags.



Bale not manila in appearance, more than 5% paper and waxed greeting cards. Grade more consistent with mixed papers.

Cardboard 1

STRICTLY FORBIDDEN (PROHIBITIVES)

Should **NOT** contain wastes listed in the National Catalogue of Hazardous Wastes, as there is a 0% tolerance. This includes the following (although this list is not exhaustive):

- ✗ Food waste
- ✗ Garden waste
- ✗ Medical, hygiene and pharmaceutical waste
- ✗ Hazardous waste (paint, chemicals, oil, asbestos)
- ✗ Nappies
- ✗ Concrete, soil, stone and brick
- ✗ Bitumen
- ✗ Electrical equipment, wire or batteries
- ✗ Burnt or partially burnt paper
- ✗ Corrosive, toxic or flammable material
- ✗ Wood
- ✗ Wallpaper
- ✗ Magnetic tape or photosensitive material (e.g. x-ray film, video tape)

NO RADIOACTIVE MATERIAL, EXPLOSIVE WEAPONS OR AMMUNITION IS ALLOWED

Yorwaste guarantee to recycle 100% of acceptable material received. The only exception to this will be any material that does not meet our specification. This may be sent to energy from waste and will be charged if it cannot be placed into another more suitable grade.

Cardboard must be majority brown in colour, contain no wet strength material, cores or paper, as per guide above. Downgrade from cardboard if greater than 5% other card and paper. This is known as SOFTMIX. Downgrade if not meeting Cardboard 1 Specification to Cardboard 2. If contamination is more than 5% details to be noted on weighbridge transaction.